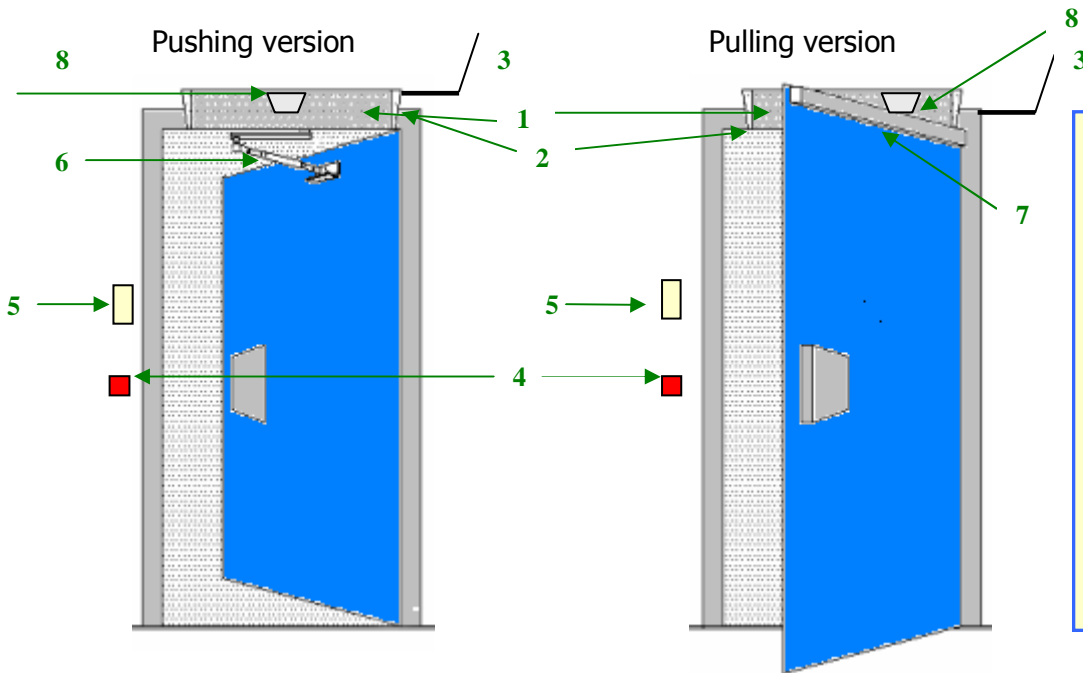


User Instruction

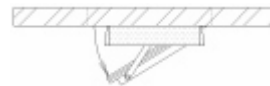
Swing Door Operator UWD2200



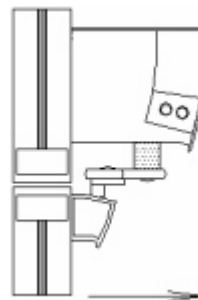
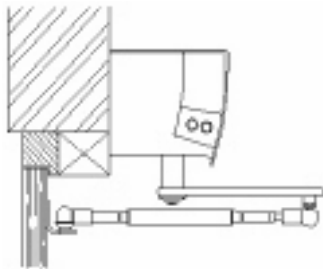
- 1) Swing door operator with cover
- 2) Programme selector (L or R)
- 3) Line cable (230V AC with earth)
- 4) Electrical lock (option)
- 5) Switch / Pushbutton
- 6) Door arm (pushing)
- 7) Door arm (pulling)
- 8) Motion detector / signals



Pushing door arm

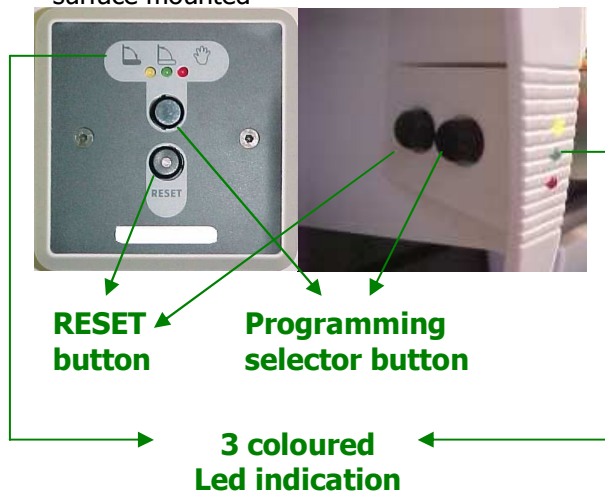


Pulling door arm



PGT, surface mounted

PGT, built in



RESET button

Programming selector button

3 coloured Led indication

Use of the programming selector button (PGT)

Automatic (yellow):

The door opens after an 'open-command' and closes after the open hold time has run off.

Open (green):

The door opens and stays in open position.

Manual (red):

The door function as the same as a normal spring closer and is electrically switched off except when the door is locked.

Programming selector button (with 3-coloured LED indication):

The 3 PGT functions are selectable by pressing the **programming selector button**.

By pressing the PGT **button** the next function is selected and the function **LED** is switched on.

By pressing again the **PGT**, the next function is selected, etc

(Cycle = auto - manual - open - auto - etc. (Open and manual are carried out after 1 sec.).

After switching on the power supply the **UWD2200** is always switched in **AUTOMATIC** position

RESET-button (with LED indication):

In case of an error, the **reset-LED** (error) and **buzzer** (30 sec. and then 5 sec. after each PGT change) is flashing with a pre-programmed frequency.

By pushing minimum 7 seconds on the **reset button** an error can be solved.

In case of a master/slave configuration the slave receives the reset command as well.

In case of a not flashing **reset-LED** and the **reset button** has pressed for at least 7 seconds, the internal test procedure is started for about 15 seconds.

Power failure

During **power failure**, the door is (light) manually to open and is closing on spring power. (except when the door is locked). All values stays memorized.

Attention!

- The KONE swing door operators for automatic swing doors are designed to open and close swing doors as reliable as possible and to allow people a safe entry or exit. To prevent people for dangerous situations it is not advisable to stand continuously in the swing area despite of a built in safety reverse.
- If the door operator is damaged, people get injured or cause any other damage because of improper use or improper application of technical data and/or equipment **KONE Deursystemen BV** will accept no liability, supply parts under the guarantee, or carry out repairs.
- Programming of motor types and input functions can and may only be carried out by trained and certified people, i.e. have a certificate issued by the manufacturer.
- Only **qualified people** should carry out electrical connections to the electricity mains.
- **Electrical connections** to/on the program control box should only be carried out by qualified people and only after switching off the line power and the optional battery power supply.
- To check the declaration of conformity visit our website.

Service

You just bought a quality product that was manufactured due to the European regulations. Despite of the high quality of this product it is possible that under certain circumstances the door doesn't operate well. Before contacting the service department, first check the points below:

- ✓ Is the right position selected on the programming selector button (PGT)?
- ✓ Are the doors not obstructed and can they open maximum?
- ✓ Is the line power present?
- ✓ Is a possible emergency button pressed?
- ✓ Is a possible fire alarm contact switched on?
- ✓ Does pressing the RESET button solve the problem?
- ✓ Does switching off and on the line power solve the problem?

If you were not able to solve the problem please contact your nearest dealer.

You can also visit our website for more information: www.kone.com or www.waldoor.com